

The

BRYOLOGICAL TIMES

Newsletter of the International Association of Bryologists

ISSN 0253-4738

September, 1983.

No. 22

ON THE STATE OF AFFAIRS IN I A B

A REPORT ON THE IAB COUNCIL MEETING IN TOKYO, 1983,

BY S.R. GRADSTEIN, SECRETARY OF IAB.

IAB COUNCIL MET IN TOKYO on May 26, 1983, during the World Conference of Bryology. The meeting was attended by 11 Council members and was chaired by the President, Dr. H. Inoue. Unable to attend were Councillors M.R. Crosby, T. Koponen, G.A.M. Scott and D.H. Vitt.

The meeting focused on practically all affairs of the Association and lasted well over three hours. This report deals with the results of the meeting as well as with some more recent developments resulting from decisions taken at this meeting. Items that have been dealt with already in the Bryological Times (e.g. the IAB Medal) will only be mentioned here briefly.

Changes in the Constitution

Shortly before the meeting took place, Council received the final report of the IAB Constitution Committee chaired by Dr. G.S. Mogensen. The report was the result of three years of deliberations and contained a number of proposals for changes in the present text of the Constitution. Most of the proposed changes, often intended to bring the text more in line with the Association's current policies and practices, were accepted by voting, some, however, only after lengthy debate and alteration or rephrasing. Thus a rewrite was accepted of the Membership section with suppression of the terms "Associate membership" and "Regular membership" by IAB membership or IAB / IAPT membership), as advocated earlier in the Bryological Times. A policy for the Advances in Bryology not to publish original research papers, but to leave this to the established bryological journals was incorporated in the paragraph on publication objectives (Art.4 iv). Further-

more, Council election procedures were clarified and changed in the sense that nominations for candidates should come primarily from the membership. A proposal to change the period of office of the Secretary was not accepted.

In accordance with the Rules all changed accepted by Council shall be submitted for adopted to the members of IAB in a mail ballot.

Council also approved a set of by-laws for the operation of IAB groups and committees. The new text of the Constitution, once adopted, will be made available to members along with the Bryological Times.

The IAB Constitution Committee was dissolved with thanks.

Publication Policies

Following a strong plea by the IAB Publication Policy Committee, chaired by Dr. L.E. Anderson, to revive the Bulletin in TAXON, it was decided to resume publication of the Bulletin of Bryology as soon as practicable. Dr. Diana Horton has now accepted editorship of the Bulletin (see Bryol. Times 21:4). The Committee's recommendation to introduce a rotation plan for the members of the Editorial Board of the Advances in Bryology was also accepted. The Editorial Board is to be reviewed after the appearance of each volume and changed at the discretion of the editor.

In general, the Committee and Council felt that IAB publications are functioning well and that there was no need for the establishment of a permanent publication policy committee. Thus, the IAB Publication Policy Committee was dissolved with thanks.

Hedwig Medal

Thanks to the efficient work of the IAB Medal Committee, chaired by Dr. S.W. Greene, two medals could be awarded in Tokyo, one to Dr. Yoshinori Asakawa, Tokushima-Bunri University, Japan, and one to Dr. Geneva Sayre, Harvard University, Cambridge, USA. The award was made possible by private donations and by a grant from the Organizing Committee of the World Conference of Bryology. The medal will only be awarded infrequently and it was decided to present the next one(s) in Berlin, 1987. The IAB Medal Committee was dissolved with thanks.

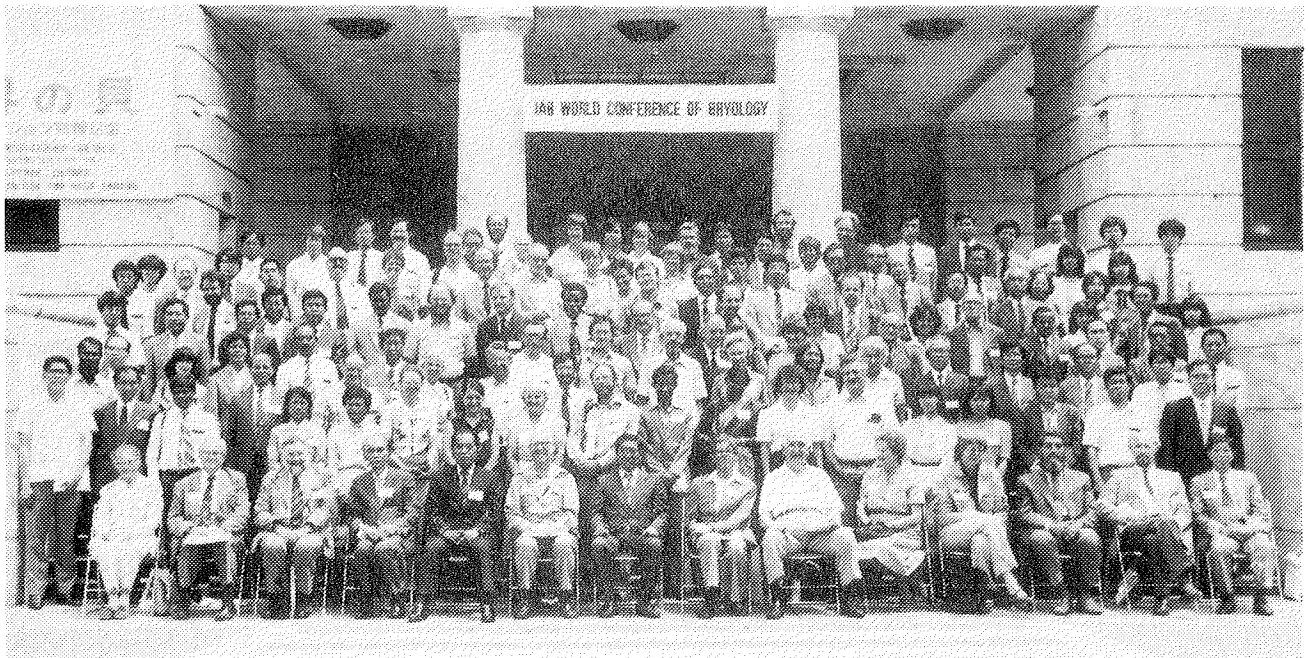
Multilingual Glossary of Bryophyte Terms

Dr. Bob Magill presented a progress report on behalf of the IAB Glossary Committee, which it is intended to publish in a future issue of the Bryol. Times. The final text of the Glossary will include English, French, German, Spanish, Japanese and may be Russian versions and will be produced with the aid of computer facilities at the Missouri Botanical Garden. It was decided to seek a publisher offering favourable publishing conditions. Dr. Magill was appointed Chairman of the IAB Glossary Committee.

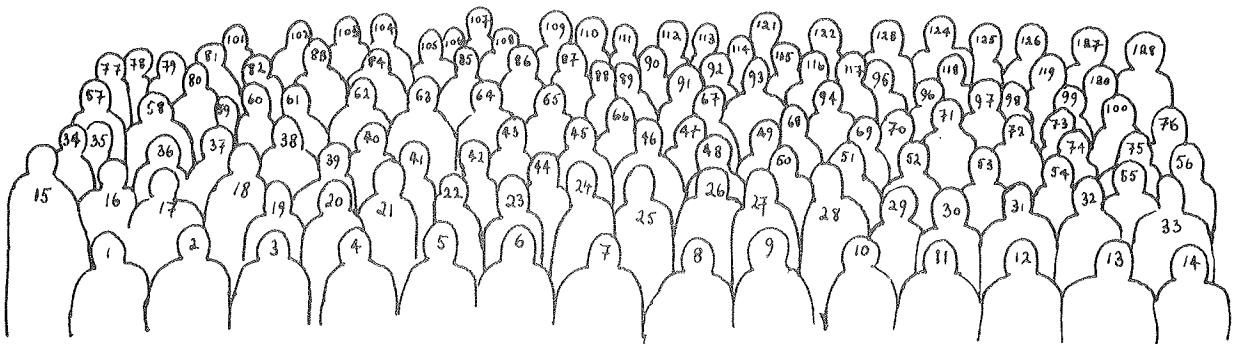
Compendium of Bryophyte Herbaria, Collections and Research

It is intended to combine the data on bryological research in the Directory of Bryologists with the contents of the Guide to Bryological Herbaria into one volume which will be revised about every ten years. The first combined edition is scheduled to appear in 1984 (see p. 5 this issue). Since the addresses given in the present Directory need more frequent updating, from now on they will be published every two or three years in format as a Supplement to the Bryological Times.

(Continued on page 3.)



DELEGATES AT THE IAB WORLD CONFERENCE OF BRYOLOGY, TOKYO, 1983.



1. E. Sharp; 2. A.J. Sharp; 3. S.W. Greene; 4. S. Hattori; 5. H. Inoue; 6. L. E. Anderson ;
7. M. Morosawa; 8. P.W. Richards; 9. W.C. Steere; 10. D.O. Steere; 11. H.Bischler; 12. T. Pócs;
13. S. R. Gradstein; 14. Z. Iwatsuki; 15. B.C. Tan; 16. P-c Wu; 17. S. C. Srivastava;
18. R.N. Chopra; 19. M-x Zhang; 20. O. Thaithong; 21. J.Glime; 22. J.E. Beever; 23. H.P. Ramsay;
24. R.D. Seppelt; 25. S.C. Bhatla; 26. K. Rani; 27. M.R. Basile; 28. D.V. Basile; 29.R.Matsuda;
30. K. Takikawa; 31. N. Kitagawa; 32. H. Deguchi; 33. I. Yoshimura; 34. M. A. Haji Mohamed;
35. H. Ando; 36. I. Herrnstadt; 37. P-j Lin; 38. S.S. Kumar; 39. E.B. Spiess; 40. C. Gao;
41. L.D. Spiess; 42. M. Bopp; 43. A. Touw; 44. G.R. Brassard; 45. A.R. Perry; 46.J.C. Gardiner;
47. H. Hürlimann; 48. M. Milnes-Smith; 49. P. Geissler; 50. S. Russell; 51. E.O. Campbell ;
52. A. Noguchi; 53. Y. Asakawa; 54. S. Inoue; 55. N. Nishimura; 56. K. Yamada; 57. S. Imura ;
58. T. Seki; 59. T. Hirohama; 60. K. Ono; 61. M. Masubuchi; 62. D. Y. Joshi; 63. D.J. Cove ;
64. E. Hartman; 65. A.Egunyomi; 66. H.N. Mzingo; 67. R. Mues; 68.Mrs. R. Mues; 69.J. Szweykowski;
70. C-i Wu; 71. E.C. Wallace; 72. N.V. Biradar; 73.Miss Hibino; 74. T. Suzuki; 75. H. Kiguchi ;
76. Y. Hongo; 77. T. Furuki; 78.J.Kimura; 79. W.B. Schofield; 80. R.E. Longton; 81. H. Shimizu ;
82. H. Taoda; 83. R.A. Pursell; 84. D.G. Horton; 85. G. Mogensen; 86. R. Duell; 87. I Duell;
88. C. Sérgio; 89. J.A. Christy; 90. G.G. Hässel de Menéndez; 91. H. Suzuki; 92. C.M. Matteri;
93. K. Katoh; 94. J. Vaña; 95.M.Kamimura; 96. M-j Lai; 97.N.Takaki;98.U.Mizushima; 99.Y.Shimamura;
100. Y. Ohta; 101. K. Une; 102. J.M. Ide; 103. T. Nakamura; 104. R.E. Magill; 105. W. R. Buck;
106. L. Stange; 107. N.G. Miller; 108.A.Richards; 109.P.M. Selkirk; 110.S-h Lin; 111. B.M.Murray;
112. W. Schultze-Motel; 113. M. Higuchi; 114. K. Nehira; 115. N. C. Slack; 116. S. Nakanishi;
117. Y. Kuwahara; 118. S.K. Billore; 119.Miss Terasaki; 120. Miss H.Inoue; 121. R.I.Lewis-Smith;
122. G.A. Slack; 123. J. Hasegawa; 124. M. Mizutani; 125. M. Nakashima; 126.H.Akiyama;127. H.Doei;
128. T. Yamaguchi.

Committee for Tropical Bryology

Dr. Claudio Delgadillo, Chairman of the newly-established IAB Committee for Tropical Bryology, presented an outline of its aims and activities (see elsewhere on this page). One of the basic aims is to stimulate the development of bryology in tropical countries (research, teaching, conservation). Council approved the Committee's plans which are in line with the resolutions adopted in Geneva in 1979. The Committee will also be asked to review the "recommendations for botanists visiting Neotropical countries" (by S.A. Mori and L.B. Holm-Nielsen, *Taxon* 30: 87-89, 1981), and to recommend appropriate guidelines for bryologists collecting in the tropics.

Finances

IAB finances are still in small part based on actual income and in large part on the IAPT affiliation, plus the goodwill of the Universities of Utrecht and Reading, the Missouri Botanical Garden and the National Science Museum of Tokyo (the latter two acting as distribution centres for the *Bryological Times*). Income in 1982 amounted to US \$ 1600, while expenses actually paid were \$ 1040 for the *Bryological Times* and \$ 258 for administration. The balance of \$ 202 is largely consumed as a contribution towards IAPT staff service (calculated for 1982 at \$ 800). As the University of Reading's contribution to the production and distribution of the *Bryological Times* was becoming excessive, we were fortunate to receive a grant of US \$ 500 from the International Union of Biological Sciences to cover part of these costs. It is hoped that IUBS support will continue, at least for the next two years. We are continuing to establish new distribution centres and have accepted with gratitude offers from China (Dr. Wu) and Australasia (Dr. Seppelt).

The Secretary was asked to enquire about future relationships with IAPT in view of the fact that the IAPT office will move from Utrecht in 1987. It was also suggested that a treasurer or business manager may eventually be needed to deal with the Association's financial affairs. In the meantime Dr. Inoue has made arrangements for the establishment of a special IAB fund to support the activities of the Association.

Future Meetings

Council welcomed plans for

a Bryophyte Ecology Conference in Hungary, 1985 (Organizers: Dr. Pócs and Dr. Simon) and for Bryological Symposia at the XIV International Botanical Congress in Berlin, 1987) (Organizer: Dr. Schultze - Motel). It was emphasized that the bryology meeting should focus on original research and as far as possible avoid the presentation of review papers. For 1989 an official invitation was received to hold a bryological conference in St. Louis at the Missouri Botanical Garden. The invitation will be considered further, taking account of other suggested locations, i.e. Mexico and Costa Rica. It is proposed to focus this meeting mainly on aspects of tropical bryology.

Based upon Resolution No. 1. (*Bryol. Times* 21:4) adopted by the 150 Congress participants in Tokyo, the policy of the Association will be to organize international conferences every two or three years with an emphasis on new research in all areas of bryology. In addition a more serious effort will be made to integrate bryology with other disciplines in international meetings, such as at International Botanical Congresses.

We look forward with expectations to the forthcoming meetings in Hungary and Berlin, to see the fruits of these intentions.

IAB'S COMMITTEE FOR TROPICAL BRYOLOGY

IN 1979 THE BRYOLOGISTS attending the IAB taxonomic workshop meeting in Geneva passed a set of nine resolutions which concerned bryology and bryological research (*Taxon* 29:370-371, 1980). The first three were relevant to bryology in the tropics and were directly or indirectly dealt with by the Association in mid 1981. Following the International Botanical Congress in Sydney, IAB Council set up a Committee for Tropical Bryology (CTB) whose general objectives and purposes are outlined below. The membership of the Committee was published in *Bryol. Times* 19:2, 1983.

The Committee is concerned with the advancement of bryological research and conservation of bryologically-important areas in the tropics of the world. Even though study and conservation are long-term goals, it is felt that the CTB

can promote certain activities which may be significant to increasing understanding and arousing interest in problems in these areas, e.g. through teaching, research and publicity.

As far as teaching is concerned, CTB will provide a list of institutions that could offer bryological training for students interested in tropical bryophytes, whether they reside in the tropical zone or elsewhere. In addition, CTB will seek to negotiate support to enable one or two promising students from tropical countries to spend a year of study at one or more of the major institutions with active bryological programmes in the tropics, or with large botanical collections and library facilities.

Research in tropical areas needs an awareness of the activities of others in the same or related fields. Because of this, CTB will produce a listing of relevant projects as a guide to on-going research, and as an indication to students who wish to know what needs doing in a given field. The Committee will also solicit the collection of sets of relevant reprints for the benefit of researchers and students working in areas with poor library facilities.

There is no doubt that tropical floras are under continued pressure from ever-expanding human populations and that these pressures are a great danger to bryophyte habitats. In order to bring them to the attention of those who may take positive action, members of CTB will attempt a compilation of endangered forest areas and other tropical ecosystems which are the subject of destructive practices. In addition, letters will be sent to conservation organizations and societies to promote awareness of the need to conserve endangered floras. These should represent research priority areas that bryologists may wish to consider for study. In the event that funds are available, IAB could sponsor a scientific programme to visit and work in one such area.

Claudio Delgadillo, Chairman IAB Committee for Tropical Bryology. Instituto de Biología, Universidad Nacional Autónoma de México, Apartado Postal 70-233, 045100, México D.F.

WORKING GROUP FOR MAPPING BRYOPHYTES IN EUROPE

LIST OF TAXA TO BE MAPPED BEFORE DECEMBER, 1983.

HEPATICA

- Adelanthus decipiens* (Hook.) Mitt. SMITH A.J.E.
Anastrophyllum assimile (Mitt.) Steph. VANA J.
Anthoceros mandonii Steph. SERGIO C.
Bazzania flaccida (Dum.) Grolle SMITH A.J.E.
Calyptogeia arguta Mont. & Nees PHILIPPI G.
Cololejeunea minutissima (Sm.) Schiffn. WALLACE E.C.
Douinia ovata (Dicks.) Buch SCHUMACKER R.
Dumortiera hirsuta (Sw.) Nees
Herbertus sendtneri (Nees) Lindb. VANA J.
jenseniana Grolle VANA & SCHUMACKER
paroica (Schiffn.) Grolle SMITH A.J.E.
Jubula hutchinsiae (Hook.) Dum. WALLACE E.C.
Lepidozia cupressina (Sw.) Lindenb. SCHUMACKER R.
Lophozia capitata (Hook.) Macoun GEISSLER P.
Marchesinia mackaii (Hook.) S. Gray
Metzgeria fruticulosa (Dicks.) Evans (MR) DUELL R.
temperata Kuwah. (MR) DUELL R.
Nardia compressa (Hook.) S.Gray SCHUMACKER R.
insecta Lindb. (MR) SCHUMACKER & VANA
- Odontoschisma denudatum* (Nees)
 in Mart.) Dum.) GRADSTEIN S.R.
elongatum (Lindb.) Evans (MR)) & DIERSSEN K.
macounii (Aust.) Underw.) DIERSSEN K.
 N.B. For these 3 *Odontoschisma* taxa material from B, BM, BP, BR, CO, DUIS, G, H, KIEL, L, LG, LGHF, MUN, PR, PRH, U, W, WU, ZUR has been completely revised by K.DIERSSEN, S.R.GRADSTEIN & R.SCHUMACKER; but complementary material from the mountainous regions of eastern and southern Europe is needed.
- Pedinophyllum interruptum* (Nees) Kaal (MR) SCHUMACKER R.
Petalophyllum ralfsii (Wils.) Nees & Gott. CASAS-SICART C.
Phaeoceros bulbiculosus (Brotero) Prosk. URMI E.
Riccia breidlerii Jur. JOVET S.
crustata Trab. ex Grolle JOVET & BISCHLER?
gougetiana Durieu & Mont. Idem?
lamellosa Raddi Idem?
Saccogygna viticulosa (L.) Dum.
Scapania ornithopodioides (With.) Wadel
- N.B. Help is also requested for mapping, before 1985, 3 widely-distributed liverworts: *Frullania dilatata*; *Frullania tamarisci* (which seems to be in serious regression in some regions); *Diplophyllum albicans*.

MUSCI

- Anocolia webbia* (Mont.) Schimp. CORTINI C.
Anomodon rostratus (Hedw.) Schimp. SCHUMACKER R.
Aongstroemia longipes (Sommerf.) B.S.G.
Aplodon wormskjoldii (Hornem.) Kindb. DIERSSEN K.
Arctoa andersonii Wich. hyperboræa (With.) B.S.G.
Aschisma carniolicum (Web. & Mohr) Lindb. SERGIO C.
Blindia acuta (Hedw.) B.S.G. URMI E.
Breutelia chrysocoma (Hedw.) Limpr.
- Bryoerythrophyllum alpigenum* (Vent.) Chen (MR) DUELL R.
jamesonii (Tayl.) Crum (MR) DUELL R.
rubrum (Jur. ex Geh.) Chen (MR) DUELL R.
Bryum marratii Hook. (MR) DURING H.
Cheilanthes chloropus (Brid.) Lind. SERGIO C.
Cryphaea lamyana (Mont.) C. Muell. PRESTON C.
Desmatodon guepenii B.S.G. SERGIO C.
Dicranum groenlandicum Brid. LECOINTE A.
scottianum Turn. (MR) URMI E. & FUTSCHIG A.
Distichophyllum carinatum Dix. & Nichols.
Encalypta rhabdocarpa Schwaegr.
Entosthodon durieui Mont. CASAS SICART C.
hungaricus (Boros) Loeske CASAS SICART C.
Epipterygium tozeri (Grev.) Lindb. NORDHORN G.
Fissidens polyphyllus Wils. ex B.S.G. (MR) SCHUMACKER R.
Grimmia crinita Brid. CASAS SICART C.
pitardii Corb. CASAS SICART C.
Homalothecium aureum (Spruce) Robins CORTINI C.
Isopterygiopsis muellerana (Schimp.) Iwats. OCHYRA R.
Lepidopilum virens (Brid.) Brid. SERGIO & CASAS
Leptodontium styriacum (Jur.) Limpr. (MR) SICART C.
Mielichhoferia mielichhoferii (Hook.) Wijk & Marg. DUELL R.
Orthothecium rufescens (Brid.) B.S.G.
Phascum curvicolle Hedw. CASAS SICART C.
cuspidatum Hedw. CASAS SICART C.
cuynetii Biz. & Pierrot CASAS SICART C.
Psilopilum cavifolium (Wils.) I. Hag
laevigatum (Wahlenb.) Lindb.
Racomitrium ellipticum (Turn.) B.S.G. (MR) SMITH A. J. E.
Rhizomnium andrewsianum (Steere) T. Kop.
Sphagnum imbricatum Hornsch. DE ZUTTERE P. & KRUYT P.
 ex Russ. TOUFFET J.
pylaii Brid. HILL M. & DE ZUTTERE P.
strictum Sull.
Stegonia latifolia (Schwaegr.) Vent. & Broth.
Thuidium abietinum subsp. *hystricosum* (Mitt.) Kindb. DUELL I.
Timmia flexiseta (Bruch) Limpr.
Tortella inflexa (Bruch) Broth. (MR) CASAS SICART C.
Tortula caninervis (Mitt.) Buch (MR) CASAS SICART C.
cuneifolia (With.) Turn. DUELL R. (C. Europe only)
velenovskii Schiffn. SZMAJDA & KARCZMARZ
Trichostomopsis umbrosa (C. Muell.) Robins CASAS SICART C.
trivialis (C. Muell.) Robins CASAS SICART C.
Uloa phyllantha Brid. LECOINTE A.
Weissia longifolia Mitt. SERGIO C.

For information about the origins, the programme and the activities of the Working Group, see Taxon 29:672-673 (1980) and Bryological Times 19: 1-2, (1983). Further information will be gladly supplied by the Secretary. - see opposite -

IN THE LISTS opposite, names in CAPITALS are the names of the collaborators who are directly responsible for mapping the taxa as indicated, and information on records, herbarium, specimens, etc., should be sent to them. In all other cases, please communicate with the Secretary. (MR) after a name indicates that herbarium material is wanted for revision. Please check not only herbarium collections, but also field note books and publications. Also please give the year of collection or observation as well as the locality.

As far as possible, all available information (even if it is fragmentary) should be addressed to the relevant collaborator, or the Secretary, before 1st December, 1983.

If you, or one of your collaborators - professional or amateur - is interested in accepting responsibility for one or more of the 250 species to be mapped (full list available on request) or for another taxon of special interest to you, please write to the Secretary.

Please give the most accurate indication of localities and, if possible, their international UTM 10 x 10 km square (if not, the UTM 50 x 50 km square) or international geographical co-ordinates. This will save a lot of time looking for these details.

We are grateful to all who are helping us to validate the enormous amount of bryofloristical data available in Europe so that we can present the distribution patterns of bryophytes within Europe at an appropriate scale.

Prof. dr. R. Schumacker, Secretary of the WGMBE, University of Liège, Station Scientifiques des Hautes-Fagnes, B-4898, Mont-Rigi, Robertville, Belgique.

Deaths

KOPPE, Karl on 18th August, 1979 in Berlin.

He was born 22nd May, 1890, in Zempelkowo, Kreis Flatow (Westpreussia). His bryophyte herbarium has been given to the Martin-Luther Universität (HAL) in Halle.

Personalia

Prof. S.S. KUMAR of Panjab University, Chandigarh, India, will be working at the Institute of Pharmacognosy, Tokushima-Bunri University, Yamashirocho, Tokushima 770, Japan, from September to December, 1983.

Mr. JAN MEENKS of the Institute of Systematic Botany, University of Utrecht, The Netherlands, began working on 1 June, 1983, with Dr. T. Pócs at Vácraťót, Hungary, for nine months. He is revising the Cuban species of *Riccardia*.

Dr. CHIA-LI WU of Tamkang University, Tamsui, Taiwan, will be working at the Department of Chemistry, Baker Laboratory, Cornell University, Ithaca, New York, 14853, U.S.A. from 1 Aug. 1983 until 10 Aug. 1984.

DR. IWATSUKI To Leave Nichinan

DR. ZENOSKI IWATSUKI, Director of the Hattori Botanical Laboratory, will leave Nichinan to take up the post of Associate Professor at Hiroshima University as from 1 January 1984. His address from that date will be: Institute of Botany, Faculty of Science, Hiroshima University, 1-1-89, Higashi-senda-cho, Naka-ku, Hiroshima City 730, Japan. It is expected that he will travel a number of times to Nichinan between 1 January and 31 March to enable him to complete remaining business.

His transfer is to be attributed to the cut-backs in expenditure which are having to be made at the Hattori Botanical Laboratory due to a reduction in Government funding.

S. Hattori, Hattori Bot. Lab., Obi Nichinan, Miyazaki Pref., Japan.

MAHABALE, T.S.
on 3rd July, 1983.

Prof. Mahabale, the former Head of the Department of Botany, Poona University, and Director of the Institute of Maharashtra Association for the cultivation of Science, was an eminent Indian botanist and a noted bryologist with a special interest in the morphology and taxonomy of Indian liverworts.

S.S. Kumar, Panjab University, Chandigarh, India.

AN INTERNATIONAL COMPENDIUM OF BRYOLOGICAL HERBARIA, COLLECTIONS AND CURRENT RESEARCH

QUESTIONNAIRES ARE BEING DISTRIBUTED this summer and autumn to herbaria and individuals all over the world with a view to compiling a Compendium of Bryological Herbaria, Collections and Research. This Compendium is the continuation of the research section of the Directory of Bryologists (2nd ed. 1979) and the Guide to Bryological Herbaria of the World (1st ed. 1976). The new Compendium will be produced by Drs. Dale Vitt, Rob Gradstein and Zen Iwatsuki with the aid of computing facilities at the University of Edmonton, Alberta, Canada, and is scheduled to appear in the course of 1984.

Those who have not received a questionnaire or have information and/or addresses useful to the compilers, are urged to contact Rob Gradstein, Institute of Systematic Botany, Heidelberg - laan 2, Utrecht, The Netherlands, or Zen Iwatsuki, The Hattori Botanical Laboratory, 3888 Obi, Nichinan, Miyazaki Pref., Japan. Particularly welcome will be addresses of herbaria and research workers not included in the previous editions, even workers whose research impinges only marginally on bryophytes, e.g. ecologists, physiologists and chemists using bryophytes as research material.

S. R. Gradstein, Instituut voor Systematische Plantkunde, Heidelberg - laan 2, 3584 CS Utrecht, The Netherlands

TOKYO CONFERENCE ABSTRACTS

DR. H. INOUE HAS WRITTEN TO SAY that he still has available, free of charge, some 30 copies of the Conference booklet; Z. Iwatsuki & S. Inoue eds. The World Conference of Bryology, Tokyo, 22 - 28 May, 1983. A note about its contents will be found in Bryol. Times 21; 1 (1983). Anyone wanting a copy should write to Dr. H. Inoue at the National Science Museum, Tokyo. Unfortunately, Dr. Inoue no longer has available any copies of the photograph of delegates reproduced on page 2 of this issue.

Recent Publications

Bull. Br. Bryol. Soc. No. 42, 1-63, 1983.

J. Bryol. 12 (3): 331-534, 1983.

DIARY

BBS=British Bryological Society;
BLAM=Bryologish-Lichenologische
Arbeitsgemeinschaft fur Mittel-
europa; CEBWG=Central and East
European Bryological Working
Group; SBLS = Swiss Bryological
and Lichenological Society.

Sept. 2-4. BLAM. Field Meeting
in the Hochvogesen. See Bryol.
Times 19:5.

Sept. 2-9. BBS. Manchester. Joint
BBS-Systematics Association
Bryophyte Taxonomy course.
Bryol. Times 19:3, and Bull.
BBS. 42:14.

Sept. 16-18. The 1983 A. Leroy
Andrews Foray will be held
at Whiteface Mountain, Adir-
ondack Mountains, New York
State. Headquarters will
be at the Atmospheric Scien-
ces Research Center at White-
face. Further information
from Richard E. Andrus, Dep-
artment of Biol. Sci., State
Univ. of New York at Bingham-
ton, N.Y., 13901, U.S.A.

Sept. 17-18. BBS. Jubilee Meet-
ing, Bedford College, London.
Local Sec.; Mr. P.J. Wanstall,
Dept. of Plant Biology and
Microbiology, Queen Mary Col-
lege, University of London,
Mile End Road, London E1 4NS.
Full details in Bull. BBS. 41:
14, & 42:14.

Oct. 21-23. 3rd Annual mid-west
Bryological foray, West Cen-
tral Indiana, U.S.A. For
further details see Bryol.
Times 19:2.

Oct. 24-28. BLAM. Bryophyte
course with preceding 2-day
field meeting in Allgau. See
Bryol. Times 19:5.

Nov. 12-13. SBLS. Zurich or
Bern. Bestimmungstage (id-
entification days, taxono-
mic workshop). Further
details from; Dr. K. Ammann,
Syst.-Geobot. Institut Alten-
bergrain 21. CH-3013, Bern,
Switzerland.

Nov. 26-27. BBS. Taxonomic
Workshop, Whitelands College,
Putney, London. Local Sec.:
Miss J. Ide, Whitelands Col-
lege, West Hill, Putney,
London SW15 3SN. For
details see Bull. BBS. 42:14.

For details of BBS local meet-
ings during 1983, see Bull. BBS.
41:18.

1984

Feb. 17-18. SBLS. Botanical
Institute, Bern. Workshop
on numerical taxonomy. Fur-
ther details from Dr. K.
Ammann, Syst.-Geobot. Insti-
tut, Altenbergrain 21, CH -
3013, Bern, Switzerland.

April 11-18. BBS. Spring Field
Meeting, Brecon, South Wales.
Local Sec.: Mr. P.J. Port,
Hollybush Cottage, Newton
Lane, Kington, Hereford and
Worcester. Preliminary de-
tails in Bull. BBS. 42:15.

May 5/6 - 12/13. SBLS. Annual
assembly with a field trip
under the leadership of A.
and I. Schafer. Schienerberg,

southern Germany, between
Schaffhausen and Konstanz.
Further details from Dr. K.
Ammann, Syst.-Geobot. In-
stitut, Altenbergrain 21,
CH-3013, Bern, Switzerland.

July 18-25. BBS. Summer Field
Meeting, Wooler, Northumber-
land. Local Sec.: Mr. P.J.
Lightowers, Institute of
Terrestrial Ecology, Bush
Estate, Penicuik, Midloth-
ian EH26 0QB. Details
in Bull. BBS. 42:15.

Aug. 23-28. SBLS. Field
Meeting, Val Piora, Ticino
(central Alps SE of St. Got-
thard), Switzerland. Fur-
ther details from Dr. K.
Ammann, Syst.-Geobot. Insti-
tut, Altenbergrain 21, CH-
3013, Bern, Switzerland.

September. BBS. Paper-reading
meeting and AGM, Warwick-
shire. Preliminary notice
in Bull. BBS. 41:18.

1985

Spring. BBS. Field Meeting
in East Sussex. Local
Sec.: Mr. R. Stern. Pre-
liminary details in Bull. BBS.
42:15.

Summer. BBS. Field Meeting
in Scotland. Preliminary
details in Bull. BBS. 42:15.

August. CEGWG. Eger, Hungary.
4th Biennial Meeting. For
preliminary information see
Bryol. Times 18:3.

August. IAB. Budapest and
Vacratot. Ecology symposium.
For preliminary information
see Bryol. Times 18:3.

THE INTERNATIONAL ASSOCIATION OF BRYOLOGISTS publishes The Bryological Times every two months and the Advances in Bryology every two years. Material for The Bryological Times can be sent at any time, but submission dates for the Advances should be discussed with its editor, Dr. Schultze-Motel (Berlin). The editors do not accept responsibility for the views of authors.

For details regarding membership of the International Association of Bryologists (currently U.S. \$ 8.00 p.a.), write to the Honorary Secretary, Dr. S.R. Gradstein, Instituut voor Systematische Plantkunde, Heidelberglaan 2, 3584 CS Utrecht, The Netherlands.

THE BRYOLOGICAL TIMES is published in Utrecht and distributed from Missouri (USA), Reading (UK), Tokyo (Japan) and UTRECHT. All correspondence concerning mailing to : M. A. van Slageren, Instituut voor Systematische Plantkunde, Heidelberglaan 2, 3584 CS Utrecht, The Netherlands.

ITEMS FOR THE NEXT ISSUE to be with the Editor, Dr. S.W. Greene, Department of Botany, The University of Reading, London Road, Reading RG1 5AQ, Berkshire, England, (Telex 847813 RULIB) by 15th October at the latest. Items for the Techniques Notebook should be sent direct to Dr. Janice Glime, Dept. of Biological Sciences, Michigan Technological University, Houghton, Michigan 49931, U.S.A.